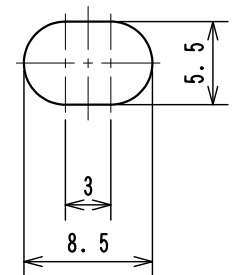
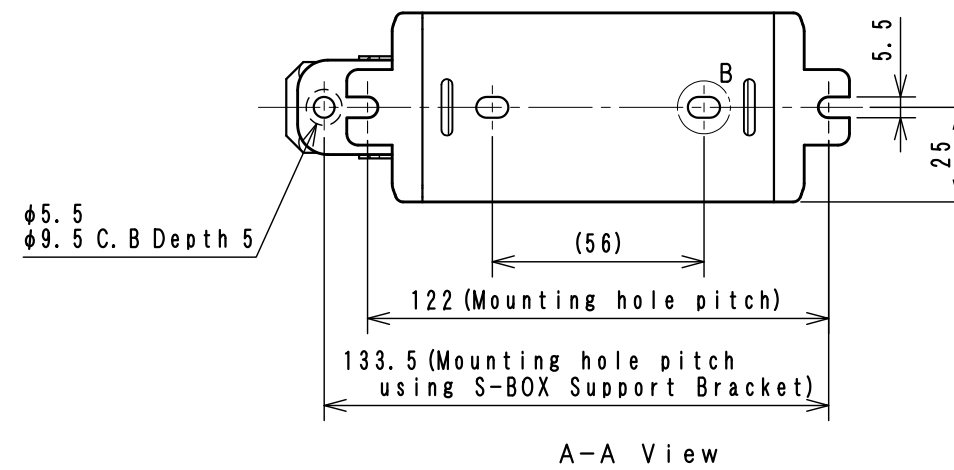
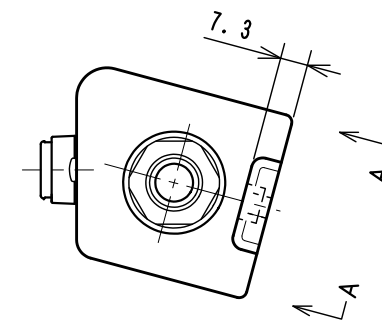
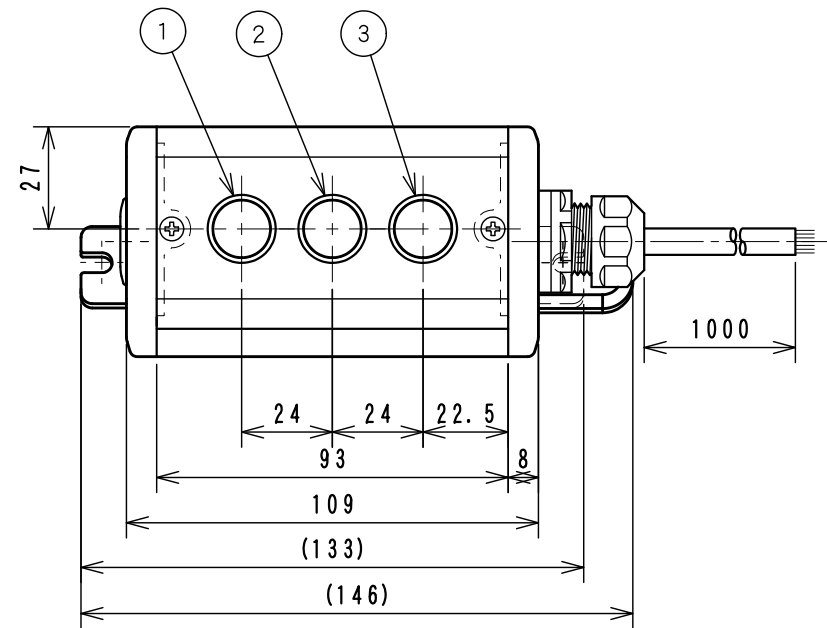
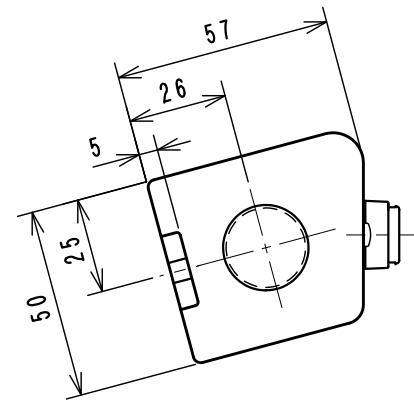


| | |
|----------|----------------------------------|
| Item No. | Assembly Name |
| NLC-328 | S-5057D Switch 3R (GRY) 1m/1P+SB |

※Attached: S-BOX Support Bracket <D4R-001B>

| | | |
|---|----------|-------------------------------|
| 1 | C1S-764G | Pushbutton Switch AR16E0R-C1G |
| 2 | C1S-764R | Pushbutton Switch AR16E0R-C1R |
| 3 | C1S-764Y | Pushbutton Switch AR16E0R-C1Y |

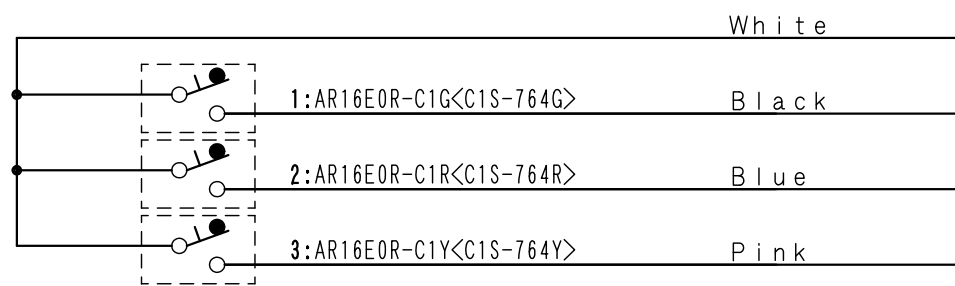


Detail B
Scale 2:1
2 Places

<Associated drawings>
WCW000521-01

| | |
|---------------------|---------|
| Applicable Item No. | NLC-318 |
| | NLC-328 |

| No. | Switch Model No. | Item No. |
|-----|------------------|----------|
| 1 | AR16E0R-C1G | C1S-764G |
| 2 | AR16E0R-C1R | C1S-764R |
| 3 | AR16E0R-C1Y | C1S-764Y |



Cable processing detail

